

VertiSep™ OA HPLC Columns

- Polymeric based column
- pH stability 0-14
- Excellent efficiency and resolution
- Reproducibility lot-to-lot and column-to-column



VertiSep™ OA columns contain 8% cross-linked spherical Polystyrene Divinylbenzene (PS-DVB) polymer with hydrogen ionic form. Available in 8 µm particle size.

VertiSep™ OA columns are useful for analysis of a wide range of organic acids (such as acetate, formate, oxalate and etc.) alone and in combination with carbohydrates, alcohols, fatty acids, and neutral compounds by ion exclusion. Water or dilute acids can be used as mobile phase. Acids are eluted usually in order of acid strength or in order of increasing pKa values. Retention times of the organic acids may be controlled through adjustment of the mobile phase pH.

For rapid separation of alcohols like methanol, ethanol, propanol, butanol and glycerol in less than 6 minutes, dimension of 7.8 x 100mm is recommended.

Typical applications include biological fluids, foods, industrial chemicals and fermentation process.

VertiSep OA™ Columns

Packing	Particle Size (µm)	I.D. Length (mm)	Part No.
OA	8	4.6 x 250	03JL-E551
	8	7.8 x 100	03JL-G351
	8	7.8 x 300	03JL-G951

VertiSep OA™ Guard Cartridges*, 2/PK

Packing	Formats	I.D. Length (mm)	Part No.
OA	Guard	4.6 x 10	03JL-E163

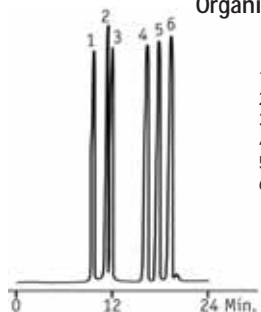
*Guard holder required

Guard Holder with Coupler

Guard Holder with Coupler	QTY	Part NO.
For column I.D. 2.1-7.8 mm	1	0300-0001



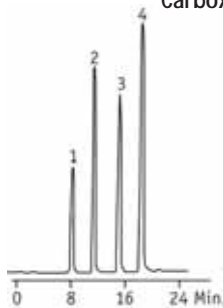
Organic Acids



1. Oxalic
2. Citric
3. Tartaric
4. Succinic
5. Formic
6. Acetic

Column: VertiSep™ OA
 Mobile Phase: 0.005N Sulfuric Acid
 Flow Rate: 0.5mL/min
 Detection: UV
 Temp: 55°C

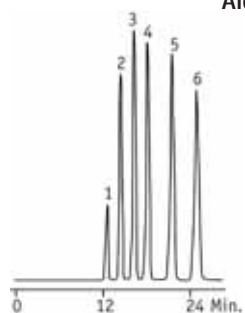
Carboxylic Acids



1. Acetylene Carboxylic Acid
2. Maleic Acid
3. Succinic Acid
4. Fumaric Acid

Column: VertiSep™ OA
 Mobile Phase: Water + 0.5% Trifluoroacetic Acid
 Flow Rate: 1.0mL/min
 Detection: RI
 Temp: 40°C

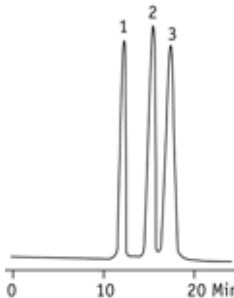
Alcohols



1. Methanol
2. Ethanol
3. Isopropanol
4. *n*-Propanol
5. *sec*-Butanol
6. *n*-Butanol

Column: VertiSep™ OA
 Mobile Phase: Water
 Flow Rate: 0.6mL/min
 Detection: RI
 Temp: 60°C

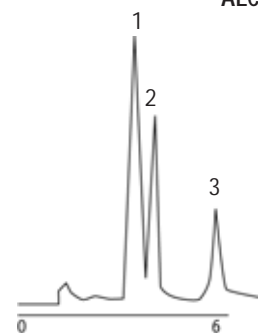
Amino Sugars



1. Glucose
2. N-Acetylglucose
3. N-Acetylgalactosamine

Column: VertiSep™ OA
 Mobile Phase: 1% Phosphoric Acid
 Flow Rate: 0.6mL/min
 Detection: RI
 Temp: Ambient

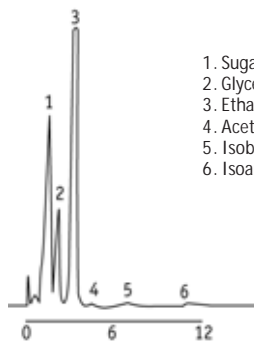
ALCOHOL



1. Glycerol
2. Acetic Acid
3. Ethanol

Column: VertiSep™ OA
 Flow Rate: 0.7mL/min
 Detection: RI
 Temp: 50°C

ALCOHOL



1. Sugars and Non-Volatile Acids
2. Glycerol
3. Ethanol
4. Acetic Acid
5. Isobutanol
6. Isoamyl Alcohol

Column: VertiSep™ OA
 Flow Rate: 0.7mL/min
 Detection: RI
 Temp: 50°C