

VertiSep™ SPS

VertiSep™ SPS HPLC Columns

- An excellent alternative to Waters® Spherisorb® at a reasonable lower price
- Most methods on Waters® Spherisorb® can be transferred to VertiSep™ SPS
- Excellent Column-to-Column reproducibility
- Full guarantee



VertiSep™ SPS packings were developed to provide a physical and performance characteristics very similar to those of Waters® Spherisorb®.

VertiSep™ SPS packings provide the results indicated comparable capacity, selectivity efficiency and peak symmetry when compared to Waters® Spherisorb®. Most methods developed on Spherisorb® can be transferred to VertiSep™ SPS, even for USP applications.

VertiSep™ SPS packings are manufactured to minimize lot-to-lot variation with a strict QC program to ensure excellent column-to-column reproducibility.

VertiSep™ SPS packings are guaranteed separations of your samples will be comparable to separations with Waters® Spherisorb® columns. If VertiSep™ SPS does not meet your satisfaction, send in comparative data within 45 days and keep VertiSep™ SPS column for FREE.

VertiSep™ SPS Packing Specifications

| Packing | Particle Size (µm) | Carbon Load (%) | Pore Size (Å) | Pore Volume (mL/g) | Surface Area (m ² /g) | End Capped |
|---------|--------------------|-----------------|---------------|--------------------|----------------------------------|------------|
| ODS1 | 3,5,10 | 6 | 80 | 0.5 | 220 | Yes |
| ODS2 | 3,5,10 | 12 | 80 | 0.5 | 220 | Yes |
| C8 | 3,5,10 | 6 | 80 | 0.5 | 220 | Yes |
| C6 | 3,5,10 | 5 | 80 | 0.5 | 220 | Yes |
| Ph | 3,5,10 | 3 | 80 | 0.5 | 220 | Yes |
| C4 | 3,5,10 | 3 | 80 | 0.5 | 220 | Yes |
| CN | 3,5,10 | 3 | 80 | 0.5 | 220 | No |
| NH2 | 3,5,10 | 2 | 80 | 0.5 | 220 | No |
| Si | 3,5,10 | - | 80 | 0.5 | 220 | No |
| SAX | 5,10 | 4 | 80 | 0.5 | 220 | No |
| SCX | 5,10 | 4 | 80 | 0.5 | 220 | No |

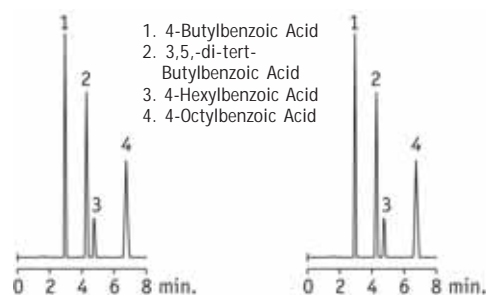
Packing Characteristics Comparison

| | Spherisorb® ODS2 | VertiSep™ SPS ODS2 |
|----------------|-----------------------|-----------------------|
| Particle Shape | Spherical | Spherical |
| Particle Size | 3,5,10 µm | 3,5,10 µm |
| Pore Size | 80 Å | 80 Å |
| Surface Area | 220 m ² /g | 220 m ² /g |
| Carbon Load | 12% | 12% |
| Endcapped | Yes | Yes |

Alkyl Benzoic Acids

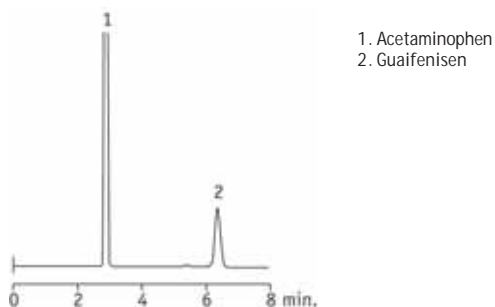
VertiSep™ SPS C8

Spherisorb® C8



Column: VertiSep™ SPS C8 5µ 4.6 x 150 mm
 Mobile Phase: Acetonitrile:Water:Acetic Acid (65:34:1)
 Flowrate: 1.0mL/min
 Detector: UV 254nm

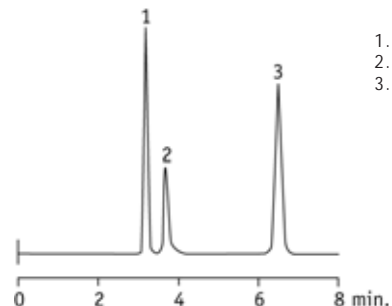
Acetaminophen and Guaifenesin



1. Acetaminophen
2. Guaifenesin

Column: VertiSep™ SPS ODS1 5 μ 4.6 x 150 mm
 Mobile Phase: Water:Methanol (65:35)
 Flow Rate: 1.0mL/min
 Detection: UV 254nm

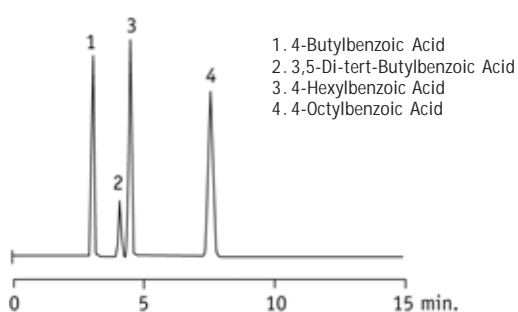
Aromatic Acids



1. Homovanillic acid
2. Benzoic acid
3. Salicylic acid

Column: VertiSep™ SPS ODS1 5 μ 4.6 x 150 mm
 Mobile Phase: 0.05M KH₂PO₄, pH 3.2 : Methanol (60:40)
 Flow Rate: 1.0mL/min
 Detection: UV254nm

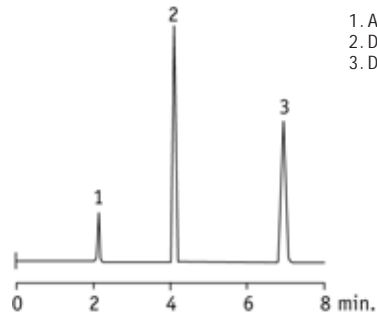
Alkyl Benzoic Acids



1. 4-Butylbenzoic Acid
2. 3,5-Di-tert-Butylbenzoic Acid
3. 4-Hexylbenzoic Acid
4. 4-Octylbenzoic Acid

Column: VertiSep™ SPS ODS1 5 μ 4.6 x 150 mm
 Mobile Phase: Acetonitrile:Water:Acetic (65:34:1)
 Flow Rate: 1.0mL/min
 Detection: UV254nm

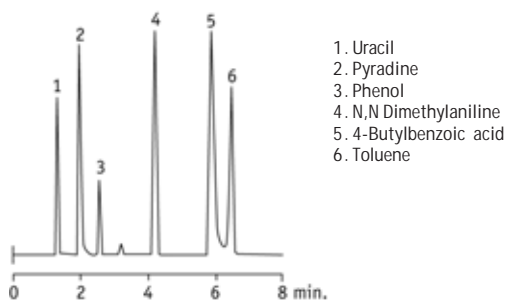
Aromatic Bases



1. Aniline
2. Dimethylaniline
3. Diethylaniline

Column: VertiSep™ SPS ODS2 5 μ 4.6 x 150 mm
 Mobile Phase: Acetonitrile:Water:TEA (65:34:1)
 Flow Rate: 1.0mL/min
 Detection: UV252nm

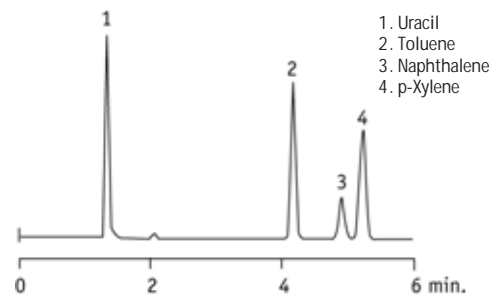
Acids, Bases and Neutrals



1. Uracil
2. Pyridine
3. Phenol
4. N,N Dimethylaniline
5. 4-Butylbenzoic acid
6. Toluene

Column: VertiSep™ SPS C8 5 μ 4.6 x 150 mm
 Mobile Phase: Acetonitrile:0.05M KH₂PO₄, pH 3.2 (50:50)
 Flow Rate: 1.0mL/min
 Temp: ambient
 Detection: UV254nm

Neutral Aromatics



1. Uracil
2. Toluene
3. Naphthalene
4. p-Xylene

Column: VertiSep™ SPS C8 5 μ 4.6 x 150 mm
 Mobile Phase: Acetonitrile:Water (60:40)
 Flow Rate: 1.0mL/min
 Temp: ambient
 Detection: UV254nm

VertiSep™ SPS

HPLC Columns

| VertiSep™ SPS Columns | | | | |
|-----------------------|--------------------|------------|------------------|-----------|
| Packing | Particle Size (µm) | Formats | I.D. Length (mm) | Part No. |
| ODS1 | 3 | LC/MS | 3.2 x 100 | 03PX-C311 |
| | 3 | LC/MS | 3.2 x 150 | 03PX-C411 |
| | 3 | Analytical | 4.0 x 100 | 03PX-D311 |
| | 3 | Analytical | 4.0 x 150 | 03PX-D411 |
| | 3 | Analytical | 4.6 x 100 | 03PX-E311 |
| | 3 | Analytical | 4.6 x 150 | 03PX-E411 |
| | 3 | Hi-speed | 7.8 x 50 | 03PX-G211 |
| | 3 | Analytical | 7.8 x 100 | 03PX-G311 |
| | 5 | LC/MS | 2.1 x 100 | 03PX-B321 |
| | 5 | LC/MS | 2.1 x 150 | 03PX-B421 |
| | 5 | LC/MS | 3.2 x 100 | 03PX-C321 |
| | 5 | LC/MS | 3.2 x 150 | 03PX-C421 |
| | 5 | Analytical | 4.0 x 100 | 03PX-D321 |
| | 5 | Analytical | 4.0 x 150 | 03PX-D421 |
| | 5 | Analytical | 4.0 x 250 | 03PX-D521 |
| | 5 | Analytical | 4.6 x 100 | 03PX-E321 |
| | 5 | Analytical | 4.6 x 125 | 03PX-EC21 |
| | 5 | Analytical | 4.6 x 150 | 03PX-E421 |
| | 5 | Analytical | 4.6 x 250 | 03PX-E521 |
| | ODS2 | 3 | LC/MS | 3.2 x 100 |
| 3 | | LC/MS | 3.2 x 150 | 03PY-C411 |
| 3 | | Analytical | 4.0 x 100 | 03PY-D311 |
| 3 | | Analytical | 4.0 x 150 | 03PY-D411 |
| 3 | | Analytical | 4.6 x 100 | 03PY-E311 |
| 3 | | Analytical | 4.6 x 150 | 03PY-E411 |
| 3 | | Hi-speed | 7.8 x 50 | 03PY-G211 |
| 3 | | Analytical | 7.8 x 100 | 03PY-G311 |
| 5 | | LC/MS | 2.1 x 100 | 03PY-B321 |
| 5 | | LC/MS | 2.1 x 150 | 03PY-B421 |
| 5 | | LC/MS | 3.2 x 100 | 03PY-C321 |
| 5 | | LC/MS | 3.2 x 150 | 03PY-C421 |
| 5 | | Analytical | 4.0 x 100 | 03PY-D321 |
| 5 | | Analytical | 4.0 x 150 | 03PY-D421 |
| 5 | | Analytical | 4.0 x 250 | 03PY-D521 |
| 5 | | Analytical | 4.6 x 100 | 03PY-E321 |
| 5 | | Analytical | 4.6 x 125 | 03PY-EC21 |
| 5 | | Analytical | 4.6 x 150 | 03PY-E421 |
| 5 | | Analytical | 4.6 x 250 | 03PY-E521 |
| 10 | | Analytical | 4.6 x 250 | 03PY-E531 |

| VertiSep™ SPS Columns | | | | |
|-----------------------|--------------------|------------|------------------|-----------|
| Packing | Particle Size (µm) | Formats | I.D. Length (mm) | Part No. |
| C8 | 3 | LC/MS | 3.2 x 100 | 03PB-C311 |
| | 3 | LC/MS | 3.2 x 150 | 03PB-C411 |
| | 3 | Analytical | 4.0 x 100 | 03PB-D311 |
| | 3 | Analytical | 4.0 x 150 | 03PB-D411 |
| | 3 | Analytical | 4.6 x 100 | 03PB-E311 |
| | 3 | Analytical | 4.6 x 150 | 03PB-E411 |
| | 3 | Hi-speed | 7.8 x 50 | 03PB-G211 |
| | 3 | Analytical | 7.8 x 100 | 03PB-G311 |
| | 5 | LC/MS | 2.1 x 100 | 03PB-B321 |
| | 5 | LC/MS | 2.1 x 150 | 03PB-B421 |
| | 5 | LC/MS | 3.2 x 100 | 03PB-C321 |
| | 5 | LC/MS | 3.2 x 150 | 03PB-C421 |
| | 5 | Analytical | 4.0 x 100 | 03PB-D321 |
| | 5 | Analytical | 4.0 x 150 | 03PB-D421 |
| | 5 | Analytical | 4.0 x 250 | 03PB-D521 |
| | 5 | Analytical | 4.6 x 100 | 03PB-E321 |
| | 5 | Analytical | 4.6 x 125 | 03PB-EC21 |
| | 5 | Analytical | 4.6 x 150 | 03PB-E421 |
| | 5 | Analytical | 4.6 x 250 | 03PB-E521 |
| | C6 | 3 | LC/MS | 3.2 x 100 |
| 3 | | LC/MS | 3.2 x 150 | 03PW-C411 |
| 3 | | Analytical | 4.0 x 100 | 03PW-D311 |
| 3 | | Analytical | 4.0 x 150 | 03PW-D411 |
| 3 | | Analytical | 4.6 x 100 | 03PW-E311 |
| 3 | | Analytical | 4.6 x 150 | 03PW-E411 |
| 3 | | Hi-speed | 7.8 x 50 | 03PW-G211 |
| 3 | | Analytical | 7.8 x 100 | 03PW-G311 |
| 5 | | LC/MS | 2.1 x 100 | 03PW-B321 |
| 5 | | LC/MS | 2.1 x 150 | 03PW-B421 |
| 5 | | LC/MS | 3.2 x 100 | 03PW-C321 |
| 5 | | LC/MS | 3.2 x 150 | 03PW-C421 |
| 5 | | Analytical | 4.0 x 100 | 03PW-D321 |
| 5 | | Analytical | 4.0 x 150 | 03PW-D421 |
| 5 | | Analytical | 4.0 x 250 | 03PW-D521 |
| 5 | | Analytical | 4.6 x 100 | 03PW-E321 |
| 5 | | Analytical | 4.6 x 125 | 03PW-EC21 |
| 5 | | Analytical | 4.6 x 150 | 03PW-E421 |
| 5 | | Analytical | 4.6 x 250 | 03PW-E521 |
| 10 | | Analytical | 4.6 x 250 | 03PW-E531 |

| VertiSep™ SPS Columns | | | | |
|-----------------------|--------------------|------------|-------------------|-----------|
| Packing | Particle Size (µm) | Formats | I. D. Length (mm) | Part No. |
| Ph | 3 | LC/MS | 3.2 x 100 | 03PD-C311 |
| | 3 | LC/MS | 3.2 x 150 | 03PD-C411 |
| | 3 | Analytical | 4.0 x 100 | 03PD-D311 |
| | 3 | Analytical | 4.0 x 150 | 03PD-D411 |
| | 3 | Analytical | 4.6 x 100 | 03PD-E311 |
| | 3 | Analytical | 4.6 x 150 | 03PD-E411 |
| | 3 | Hi-speed | 7.8 x 50 | 03PD-G211 |
| | 3 | Analytical | 7.8 x 100 | 03PD-G311 |
| | 5 | LC/MS | 2.1 x 100 | 03PD-B321 |
| | 5 | LC/MS | 2.1 x 150 | 03PD-B421 |
| | 5 | LC/MS | 3.2 x 100 | 03PD-C321 |
| | 5 | LC/MS | 3.2 x 150 | 03PD-C421 |
| | 5 | Analytical | 4.0 x 100 | 03PD-D321 |
| | 5 | Analytical | 4.0 x 150 | 03PD-D421 |
| | 5 | Analytical | 4.0 x 250 | 03PD-D521 |
| | 5 | Analytical | 4.6 x 100 | 03PD-E321 |
| | 5 | Analytical | 4.6 x 125 | 03PD-EC21 |
| | 5 | Analytical | 4.6 x 150 | 03PD-E421 |
| | 5 | Analytical | 4.6 x 250 | 03PD-E521 |
| | C4 | 10 | Analytical | 4.6 x 250 |
| 3 | | LC/MS | 3.2 x 100 | 03PC-C311 |
| 3 | | LC/MS | 3.2 x 150 | 03PC-C411 |
| 3 | | Analytical | 4.0 x 100 | 03PC-D311 |
| 3 | | Analytical | 4.0 x 150 | 03PC-D411 |
| 3 | | Analytical | 4.6 x 100 | 03PC-E311 |
| 3 | | Analytical | 4.6 x 150 | 03PC-E411 |
| 3 | | Hi-speed | 7.8 x 50 | 03PC-G211 |
| 3 | | Analytical | 7.8 x 100 | 03PC-G311 |
| 5 | | LC/MS | 2.1 x 100 | 03PC-B321 |
| 5 | | LC/MS | 2.1 x 150 | 03PC-B421 |
| 5 | | LC/MS | 3.2 x 100 | 03PC-C321 |
| 5 | | LC/MS | 3.2 x 150 | 03PC-C421 |
| 5 | | Analytical | 4.0 x 100 | 03PC-D321 |
| 5 | | Analytical | 4.0 x 150 | 03PC-D421 |
| 5 | | Analytical | 4.0 x 250 | 03PC-D521 |
| 5 | | Analytical | 4.6 x 100 | 03PC-E321 |
| 5 | | Analytical | 4.6 x 125 | 03PC-EC21 |
| 5 | | Analytical | 4.6 x 150 | 03PC-E421 |
| 5 | | Analytical | 4.6 x 250 | 03PC-E521 |
| 10 | Analytical | 4.6 x 250 | 03PC-E531 | |

| VertiSep™ SPS Columns | | | | |
|-----------------------|--------------------|------------|-------------------|-----------|
| Packing | Particle Size (µm) | Formats | I. D. Length (mm) | Part No. |
| CN | 3 | LC/MS | 3.2 x 100 | 03PE-C311 |
| | 3 | LC/MS | 3.2 x 150 | 03PE-C411 |
| | 3 | Analytical | 4.0 x 100 | 03PE-D311 |
| | 3 | Analytical | 4.0 x 150 | 03PE-D411 |
| | 3 | Analytical | 4.6 x 100 | 03PE-E311 |
| | 3 | Analytical | 4.6 x 150 | 03PE-E411 |
| | 3 | Hi-speed | 7.8 x 50 | 03PE-G211 |
| | 3 | Analytical | 7.8 x 100 | 03PE-G311 |
| | 5 | LC/MS | 2.1 x 100 | 03PE-B321 |
| | 5 | LC/MS | 2.1 x 150 | 03PE-B421 |
| | 5 | LC/MS | 3.2 x 100 | 03PE-C321 |
| | 5 | LC/MS | 3.2 x 150 | 03PE-C421 |
| | 5 | Analytical | 4.0 x 100 | 03PE-D321 |
| | 5 | Analytical | 4.0 x 150 | 03PE-D421 |
| | 5 | Analytical | 4.0 x 250 | 03PE-D521 |
| | 5 | Analytical | 4.6 x 100 | 03PE-E321 |
| | 5 | Analytical | 4.6 x 125 | 03PE-EC21 |
| | 5 | Analytical | 4.6 x 150 | 03PE-E421 |
| | 5 | Analytical | 4.6 x 250 | 03PE-E521 |
| | NH2 | 10 | Analytical | 4.6 x 250 |
| 3 | | LC/MS | 3.2 x 100 | 03PF-C311 |
| 3 | | LC/MS | 3.2 x 150 | 03PF-C411 |
| 3 | | Analytical | 4.0 x 100 | 03PF-D311 |
| 3 | | Analytical | 4.0 x 150 | 03PF-D411 |
| 3 | | Analytical | 4.6 x 100 | 03PF-E311 |
| 3 | | Analytical | 4.6 x 150 | 03PF-E411 |
| 3 | | Hi-speed | 7.8 x 50 | 03PF-G211 |
| 3 | | Analytical | 7.8 x 100 | 03PF-G311 |
| 5 | | LC/MS | 2.1 x 100 | 03PF-B321 |
| 5 | | LC/MS | 2.1 x 150 | 03PF-B421 |
| 5 | | LC/MS | 3.2 x 100 | 03PF-C321 |
| 5 | | LC/MS | 3.2 x 150 | 03PF-C421 |
| 5 | | Analytical | 4.0 x 100 | 03PF-D321 |
| 5 | | Analytical | 4.0 x 150 | 03PF-D421 |
| 5 | | Analytical | 4.0 x 250 | 03PF-D521 |
| 5 | | Analytical | 4.6 x 100 | 03PF-E321 |
| 5 | | Analytical | 4.6 x 125 | 03PF-EC21 |
| 5 | | Analytical | 4.6 x 150 | 03PF-E421 |
| 5 | | Analytical | 4.6 x 250 | 03PF-E521 |
| 10 | Analytical | 4.6 x 250 | 03PF-E531 | |

VertiSep™ SPS

VertiSep™ SPS Columns

| Packing | Particle Size (µm) | Formats | I.D. Length (mm) | Part No. |
|---------|--------------------|------------|------------------|-----------|
| Si | 3 | LC/MS | 3.2 x 100 | 03PG-C311 |
| | 3 | LC/MS | 3.2 x 150 | 03PG-C411 |
| | 3 | Analytical | 4.0 x 100 | 03PG-D311 |
| | 3 | Analytical | 4.0 x 150 | 03PG-D411 |
| | 3 | Analytical | 4.6 x 100 | 03PG-E311 |
| | 3 | Analytical | 4.6 x 150 | 03PG-E411 |
| | 3 | Hi-speed | 7.8 x 50 | 03PG-G211 |
| | 3 | Analytical | 7.8 x 100 | 03PG-G311 |
| | 5 | LC/MS | 2.1 x 100 | 03PG-B321 |
| | 5 | LC/MS | 2.1 x 150 | 03PG-B421 |
| | 5 | LC/MS | 3.2 x 100 | 03PG-C321 |
| | 5 | LC/MS | 3.2 x 150 | 03PG-C421 |
| | 5 | Analytical | 4.0 x 100 | 03PG-D321 |
| | 5 | Analytical | 4.0 x 150 | 03PG-D421 |
| | 5 | Analytical | 4.0 x 250 | 03PG-D521 |
| | 5 | Analytical | 4.6 x 100 | 03PG-E321 |
| | 5 | Analytical | 4.6 x 125 | 03PG-EC21 |
| | 5 | Analytical | 4.6 x 150 | 03PG-E421 |
| 5 | Analytical | 4.6 x 250 | 03PG-E521 | |
| 10 | Analytical | 4.6 x 250 | 03PG-E531 | |
| SCX | 5 | Analytical | 4.6 x 150 | 03PI-E421 |
| | 5 | Analytical | 4.6 x 250 | 03PI-E521 |
| | 10 | Analytical | 4.6 x 250 | 03PI-E531 |
| SAX | 5 | Analytical | 4.6 x 150 | 03PH-E421 |
| | 5 | Analytical | 4.6 x 250 | 03PH-E521 |
| | 10 | Analytical | 4.6 x 250 | 03PH-E531 |

Guard Holder with Coupler

| Guard Holder with Coupler | QTY | Part NO. |
|----------------------------|-----|-----------|
| For column I.D. 2.1-7.8 mm | 1 | 0300-0001 |



*Guard holder required

VertiSep™ GES Guard Cartridges*, 2/PK

| Packing | Particle Size (µm) | Formats | I.D. Length (mm) | Part No. |
|---------|--------------------|---------|------------------|-----------|
| ODS1 | 3 | Guard | 3.2 x 10 | 03PX-C113 |
| | 3 | Guard | 4.6 x 10 | 03PX-E113 |
| | 5 | Guard | 2.1 x 10 | 03PX-D123 |
| | 5 | Guard | 3.2 x 10 | 03PX-C123 |
| | 5 | Guard | 4.6 x 10 | 03PX-E123 |
| | 10 | Guard | 4.6 x 10 | 03PX-E133 |
| ODS2 | 3 | Guard | 3.2 x 10 | 03PY-C113 |
| | 3 | Guard | 4.6 x 10 | 03PY-E113 |
| | 5 | Guard | 2.1 x 10 | 03PY-D123 |
| | 5 | Guard | 3.2 x 10 | 03PY-C123 |
| | 5 | Guard | 4.6 x 10 | 03PY-E123 |
| | 10 | Guard | 4.6 x 10 | 03PY-E133 |
| C8 | 3 | Guard | 3.2 x 10 | 03PB-C113 |
| | 3 | Guard | 4.6 x 10 | 03PB-E113 |
| | 5 | Guard | 2.1 x 10 | 03PB-D123 |
| | 5 | Guard | 3.2 x 10 | 03PB-C123 |
| | 5 | Guard | 4.6 x 10 | 03PB-E123 |
| | 10 | Guard | 4.6 x 10 | 03PB-E133 |
| C6 | 3 | Guard | 3.2 x 10 | 03PW-C113 |
| | 3 | Guard | 4.6 x 10 | 03PW-E113 |
| | 5 | Guard | 2.1 x 10 | 03PW-D123 |
| | 5 | Guard | 3.2 x 10 | 03PW-C123 |
| | 5 | Guard | 4.6 x 10 | 03PW-E123 |
| | 10 | Guard | 4.6 x 10 | 03PW-E133 |
| Ph | 3 | Guard | 3.2 x 10 | 03PD-C113 |
| | 3 | Guard | 4.6 x 10 | 03PD-E113 |
| | 5 | Guard | 2.1 x 10 | 03PD-D123 |
| | 5 | Guard | 3.2 x 10 | 03PD-C123 |
| | 5 | Guard | 4.6 x 10 | 03PD-E123 |
| | 10 | Guard | 4.6 x 10 | 03PD-E133 |
| C4 | 3 | Guard | 3.2 x 10 | 03PC-C113 |
| | 3 | Guard | 4.6 x 10 | 03PC-E113 |
| | 5 | Guard | 2.1 x 10 | 03PC-D123 |
| | 5 | Guard | 3.2 x 10 | 03PC-C123 |
| | 5 | Guard | 4.6 x 10 | 03PC-E123 |
| | 10 | Guard | 4.6 x 10 | 03PC-E133 |
| CN | 3 | Guard | 3.2 x 10 | 03PE-C113 |
| | 3 | Guard | 4.6 x 10 | 03PE-E113 |
| | 5 | Guard | 2.1 x 10 | 03PE-D123 |
| | 5 | Guard | 3.2 x 10 | 03PE-C123 |
| | 5 | Guard | 4.6 x 10 | 03PE-E123 |
| | 10 | Guard | 4.6 x 10 | 03PE-E133 |
| NH2 | 3 | Guard | 3.2 x 10 | 03PF-C113 |
| | 3 | Guard | 4.6 x 10 | 03PF-E113 |
| | 5 | Guard | 2.1 x 10 | 03PF-D123 |
| | 5 | Guard | 3.2 x 10 | 03PF-C123 |
| | 5 | Guard | 4.6 x 10 | 03PF-E123 |
| | 10 | Guard | 4.6 x 10 | 03PF-E133 |
| Si | 3 | Guard | 3.2 x 10 | 03PG-C113 |
| | 3 | Guard | 4.6 x 10 | 03PG-E113 |
| | 5 | Guard | 2.1 x 10 | 03PG-D123 |
| | 5 | Guard | 3.2 x 10 | 03PG-C123 |
| | 5 | Guard | 4.6 x 10 | 03PG-E123 |
| | 10 | Guard | 4.6 x 10 | 03PG-E133 |
| SCX | 5 | Guard | 4.6 x 10 | 03PI-E123 |
| | 10 | Guard | 4.6 x 10 | 03PI-E133 |
| SAX | 5 | Guard | 4.6 x 10 | 03PH-E123 |
| | 10 | Guard | 4.6 x 10 | 03PH-E133 |