

VertiBond™ 1ms

VertiBond™ 1ms Capillary Columns

- 100% Dimethylpolysiloxane
- Non-polar stationary phase
- Low-Bleed for MS application or trace analysis
- High temperature range
- High efficiency, high inertness columns

VertiBond™ 1ms contains 100% Dimethylpolysiloxane stationary phase column with excellent thermal stability and low-bleed. This non-polar stationary phase improves signal to noise ratio for MS, ECD, NPD detectors and provides greater precision in trace analysis.



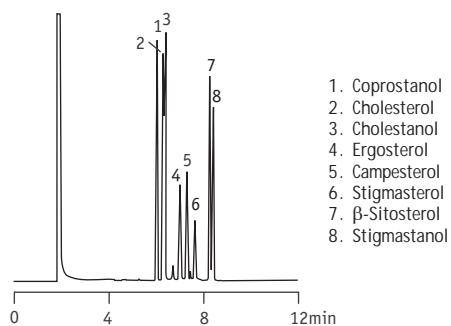
VertiBond™ 1ms Specifications	
Phase:	100% Dimethylpolysiloxane
Polarity:	Non-polar
USP Designation:	G1, G2, G38
Ideal for:	Mass Spec Analysis for Environmental, PAH, CLP, Pesticides, Steroids and Drugs

VertiBond™ 1ms equivalent phase	
Restek	Rtx-1ms
Agilent	HP-1ms, DB-1ms
Supelco	SPB-1, Equity-1, SPB-Sulfur
Alltech	AT-1ms
Varian	CP-Sil 5CBms

Ordering Information					
Length (m)	I.D. (mm)	Film (µm)	Temp. (°C)	Part No.	
15	0.25	0.10	340/360	0401-2001	
		0.25	340/360	0401-2051	
		0.50	340/360	0401-2091	
		0.32	0.10	340/360	0401-3001
		0.25	340/360	0401-3051	
		0.50	340/360	0401-3091	
30	0.25	0.50	340/360	0401-5091	
		0.10	340/360	0401-2003	
		0.25	340/360	0401-2053	
		0.50	340/360	0401-2093	
		0.32	0.10	340/360	0401-3003
		0.25	340/360	0401-3053	
60	0.25	0.50	340/360	0401-3093	
		1.00	340/360	0401-3113	
		0.53	0.50	340/360	0401-5093
		0.25	0.25	340/360	0401-2055
		0.32	0.25	340/360	0401-3055

GC Columns

Volatile Amines



Column: VertiBond™ 1ms, 30m x 0.25mm, 0.25µm
 Temp: 305°C
 Injector: split at 315°C
 (50:1 split ratio w/split flow of 32.4mL/min)
 Detector: FID at 315°C
 Carrier Gas: Helium at 0.7mL/min