

## VertiBond™ 20 Capillary Columns

- 20% Phenyl, 80% Dimethylpolysiloxane
- Intermediate polar stationary phase
- High temperature range
- High efficiency, high inertness columns

VertiBond™ 20 contains 20% Phenyl, 80% Dimethyl- polysiloxane stationary phases. This intermediate polarity phase offers unique polarity to give balance between low and mid polarity.

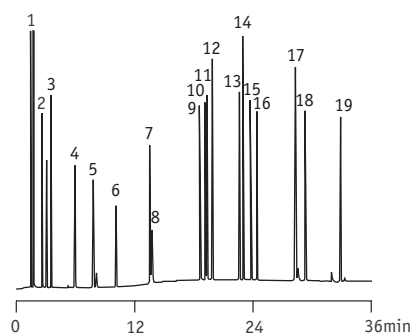
### VertiBond™ 20 Specifications

Phase:	20% Phenyl, 80% Dimethylpolysiloxane
Polarity:	Intermediate Polar
USP Designation:	G28, G32
Ideal for:	Volatile Compounds and Solvents

### VertiBond™ 20 equivalent phase

Restek	Rtx-20
Supelco	SPB-20, VOCOL
Alltech	AT-20
Ohio Valley	OV-20

### Mushroom Aroma (Synthetic)



1. Acetone
2. Ethyl acetate
3. 1-Butanol
4. 3-Methyl-1-butanol
5. 1-Pentanol
6. Hexanal
7. Furfural
8. Amyl acetate
9. 1-Octen-3-ol
10. 3-Octanol
11. 3-Octanone
12. Benzaldehyde
13. Octyl alcohol
14. Benzyl alcohol
15. Phenylacetaldehyde
16. Nonanal
17.  $\alpha$ -Terpineol
18. 2,4-Nonadienal
19. 2,4-Decadienal

Column: VertiBond™ 20, 30m x 0.32mm, 1.0 $\mu$ m  
 Temp: 45 (hold 8 min) to 250°C at 4°C/min  
 Injector: 1 $\mu$ L split injection at 260°C (split ratio: 100:1)  
 Detector: FID  
 Carrier Gas: Hydrogen 40cm/sec

### Ordering Information

Length (m)	I.D. (mm)	Film ( $\mu$ m)	Temp. (°C)	Part No.	
15	0.25	0.10	300/320	0404-2001	
		0.25	300/320	0404-2051	
		0.50	290/310	0404-2091	
	0.32	0.10	280/300	0404-2111	
			300/320	0404-3001	
		0.25	300/320	0404-3051	
			0.50	290/310	0404-3091
			1.00	280/300	0404-3111
			3.00	250/270	0404-3191
	25	0.53	0.10	260/280	0404-5001
			0.25	260/280	0404-5051
		0.50	0.25	260/280	0404-5091
1.00				260/280	0404-5111
1.20			260/280	0404-5121	
			1.50	250/270	0404-5151
			3.00	240/260	0404-5191
				260/280	0404-5122
30		0.25	0.10	300/320	0404-2003
			0.25	300/320	0404-2053
			0.50	290/310	0404-2093
		1.00	280/300	0404-2113	
	0.32			300/320	0404-3003
	0.25		300/320	0404-3053	
			290/310	0404-3093	
			1.00	280/300	0404-3113
			3.00	250/270	0404-3193
	0.53	0.10	260/280	0404-5003	
		0.25	260/280	0404-5053	
		0.50	260/280	0404-5093	



Ordering Information					
Length (m)	I.D. (mm)	Film (µm)	Temp. (°C)	Part No.	
30	0.53	1.00	260/280	0404-5113	
		1.20	260/280	0404-5123	
		1.50	250/270	0404-5153	
		3.00	240/260	0404-5193	
60	0.25	0.10	300/320	0404-2005	
		0.25	300/320	0404-2055	
		0.50	290/310	0404-2095	
		1.00	280/300	0404-2115	
		0.32	0.10	300/320	0404-3005
		0.25	300/320	0404-3055	
		0.50	290/310	0404-3095	
		1.00	280/300	0404-3115	
105	0.25	0.10	260/280	0404-3195	
		0.25	260/280	0404-5005	
		0.25	260/280	0404-5055	
		0.50	260/280	0404-5095	
		1.00	260/280	0404-5115	
		1.50	250/270	0404-5155	
		3.00	240/260	0404-5195	
		0.25	300/320	0404-2057	

