

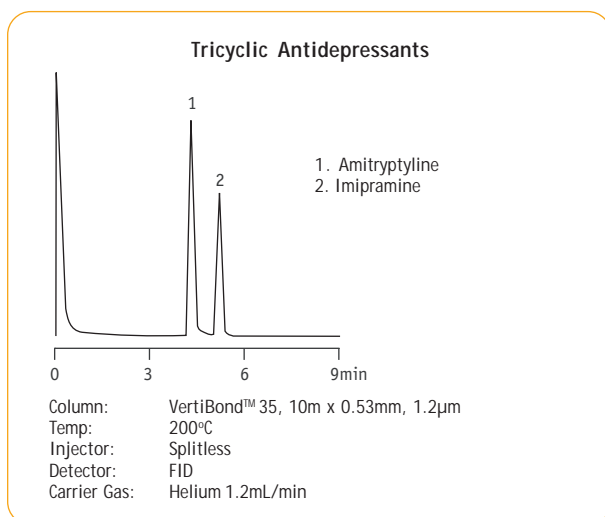
VertiBond™ 35 Capillary Columns

- 35% Phenyl, 65% Dimethylpolysiloxane
- Intermediate polar stationary phase
- High temperature range
- High efficiency, high inertness columns

VertiBond™ 35 column contains 35% phenyl, 65% Dimethylpolysiloxane stationary phases. This intermediate polarity phase provides significant elution order and retention time changes.

VertiBond™ 35 Specifications	
Phase:	35% Phenyl, 65% Dimethylpolysiloxane
Polarity:	Intermediate Polar
USP Designation:	G42
Ideal for:	Pesticides, Herbicides, Drugs, Aromatics

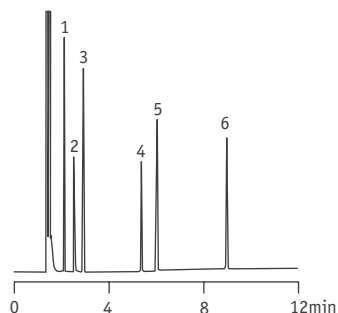
VertiBond™ 35 equivalent phase	
Restek	Rtx-35
Agilent	HP-35, DB-35
Supelco	SPB-35
Alltech	AT-35
SGE	BPX35
Varian	CP-SIL24CB
Ohio Valley	OV-11
Phenomenex	ZB-35



Ordering Information					
Length (m)	I.D. (mm)	Film (µm)	Temp. (°C)	Part No.	
10	0.53	1.20	280/300	0405-5120	
		2.65	260/280	0405-5180	
15	0.25	0.10	300/320	0405-2001	
		0.25	300/320	0405-2051	
		0.50	300/320	0405-2091	
		1.00	280/300	0405-2111	
		0.32	0.10	300/320	0405-3001
		0.15	300/320	0405-3021	
20	0.25	0.25	300/320	0405-3051	
		0.50	300/320	0405-3091	
		1.00	300/320	0405-3111	
		1.50	280/300	0405-3151	
		0.45	0.85	280/300	0405-4101
		0.53	0.10	280/300	0405-5001
		0.25	280/300	0405-5051	
		0.50	280/300	0405-5091	
		1.00	280/300	0405-5111	
		1.20	280/300	0405-5121	
25	0.25	1.50	260/280	0405-5151	
		0.20	300/320	0405-2042	
		0.30	300/320	0405-3062	
		0.53	1.20	280/300	0405-5122
30	0.25	0.10	300/320	0405-2003	
		0.15	300/320	0405-2023	
		0.20	300/320	0405-2043	
		0.25	300/320	0405-2053	
		0.50	300/320	0405-2093	
		1.00	280/300	0405-2113	

Ordering Information						
Length (m)	I.D. (mm)	Film (µm)	Temp. (°C)	Part No.		
30	0.32	0.10	300/320	0405-3003		
		0.15	300/320	0405-3023		
		0.25	300/320	0405-3053		
		0.50	300/320	0405-3093		
		1.00	300/320	0405-3113		
		1.50	280/300	0405-3153		
	0.45	0.42	0.10	300/320	0405-4073	
			0.85	280/300	0405-4103	
		0.53	0.10	0.10	280/300	0405-5003
				0.25	280/300	0405-5053
			0.50	0.50	280/300	0405-5093
				1.00	280/300	0405-5113
50	0.25	0.20	300/320	0405-2044		
		0.30	300/320	0405-3064		
		0.32	0.10	0.10	300/320	0405-2005
				0.20	300/320	0405-2045
			0.25	0.25	300/320	0405-2055
				0.50	300/320	0405-2095
	1.00			280/300	0405-2115	
	1.50			280/300	0405-3155	
	60	0.25	0.10	300/320	0405-3005	
			0.25	300/320	0405-3055	
			0.50	300/320	0405-3095	
		1.00	0.50	300/320	0405-3115	
1.00			300/320	0405-3155		
1.50			280/300	0405-5115		
0.53	0.10	0.10	280/300	0405-5005		
		0.25	280/300	0405-5055		
		0.50	280/300	0405-5095		
	1.00	0.50	280/300	0405-5115		
		1.00	280/300	0405-5155		
		1.50	260/280	0405-5155		

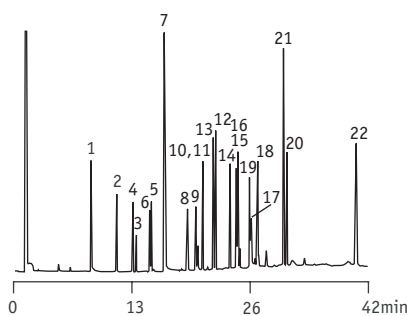
Amine Test Mix



1. Pyridine
2. 1,2-Butanediol
3. C10
4. 2-Nonanol
5. C12
6. 2,6-Dimethylaniline

Column: VertiBond™ 35, 30m x 0.53mm, 1.0µm
 Temp: 110°C (hold 4min.),
 110°C-200°C at 8°C/min 200°C (hold 5min.)
 Injector: split (10:1), 1.0µL, 4mm base-deactivated
 Detector: FID at 300°C
 Carrier Gas: Helium

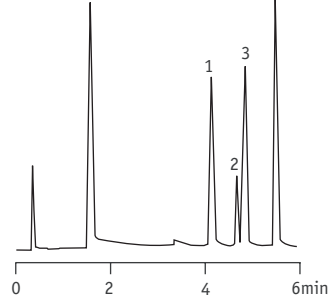
Organochlorine Pesticides



1. 2,4,5,6-Tetrachloro-m-xylene (IS)
2. α-BHC
3. β-BHC
4. γ-BHC
5. δ-BHC
6. Heptachlor
7. Aldrin
8. Heptachlor epoxide
9. γ-Chlordane
10. Endosulfan I
11. α-Chlordane
12. Dieldrin
13. p,p'-DDE
14. Endrin
15. Endosulfan II
16. p,p'-DDD
17. Endrin aldehyde
18. Endosulfan sulfate
19. p,p'-DDT
20. Endrin ketone
21. Methoxychlor
22. Decachlorobiphenyl (IS)

Column: VertiBond™ 35,
 30m x 0.53mm, 0.5µm
 Temp: 150-275°C at 4°C/min,
 275°C (hold 30min)
 Injector: Megabore Direct
 Detector: ECD at 300°C
 Carrier Gas: Nitrogen at 30mL/min

Tocopherols



1. δ-δ-Tocopherol
2. δ-β-Tocopherol
3. δ-γ-Tocopherol
4. δ-α-Tocopherol

Column: VertiBond™ 35, 25m x 0.25mm, 0.2µm
 Temp: 310°C
 Injector: Megabore Direct
 Detector: FID
 Carrier Gas: Hydrogen at 40cm/sec