

## VertiBond™ WAX Capillary Columns

- 100% Polyethylene Glycol (PEG)
- High polar stationary phase
- High temperature range
- High efficiency, high inertness columns

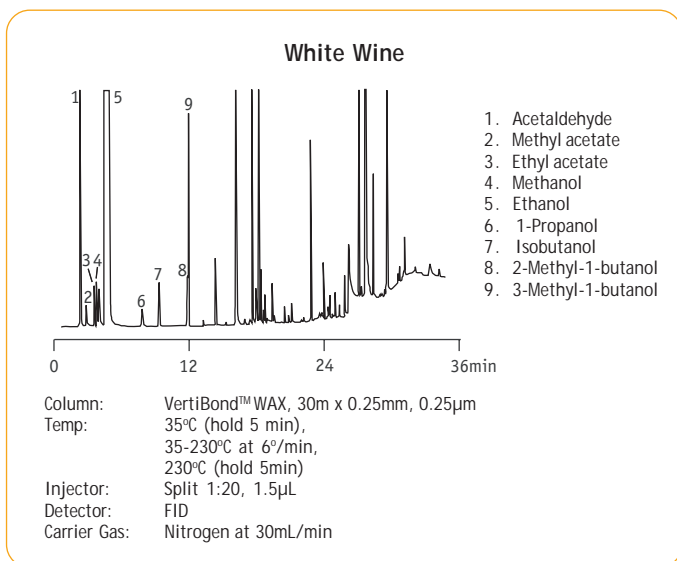
VertiBond™ WAX column contains 100% Polyethylene Glycol (PEG) stationary phase. This high polar phase offers a wide range of working temperatures (270°C) and ideals for alcohols, aldehydes, ketones, and aromatic isomers.

### VertiBond™ WAX Specifications

Phase:	100% Polyethylene Glycol
Polarity:	High Polar
USP Designation:	G14, G15, G16, G39
Ideal for:	FAMES, Polar Solvents, BTEX, Flavor and Fragranced, Glycols, Alcohols, and Aromatics

### VertiBond™ WAX Equivalent Phase

Restek	Rtx-WAX, Stabilwax
Agilent	HP-20M, HP-WAX, HP-INNOWax, HP Basic-WAX, DB-WAX, CAM
Supelco	Supelcowax 10, Omega-Wax
Alltech	AT-WAX
SGE	BP20
Varian	CP-WAX52CB, CP-WAX57CB
Ohio Valley	Carbowax 20M
Phenomenex	ZB-WAX

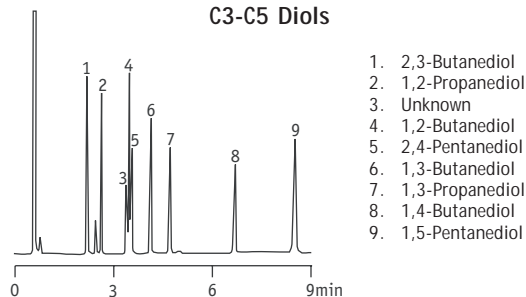


### Ordering Information

Length (m)	I.D. (mm)	Film (µm)	Temp. (°C)	Part No.	
10	0.25	0.20	250/260	0415-2040	
		0.25	250/260	0415-2050	
		1.20	250/260	0415-5120	
15	0.25	0.10	250/260	0415-2001	
		0.15	250/260	0415-2021	
		0.20	250/260	0415-2041	
		0.25	250/260	0415-2051	
		0.50	250/260	0415-2091	
		1.00	250/260	0415-2111	
		0.32	0.10	250/260	0415-3001
		0.15	250/260	0415-3021	
		0.25	250/260	0415-3051	
		0.30	250/260	0415-3061	
25	0.25	0.50	240/250	0415-3091	
		1.00	240/250	0415-3111	
		2.50	240/250	0415-3221	
		0.53	0.25	250/260	0415-5051
		0.50	250/260	0415-5091	
		1.00	250/260	0415-5111	
		1.20	250/260	0415-5121	
		1.50	250/260	0415-5151	
		2.50	240/250	0415-5221	
		5.00	240/250	0415-5211	
30	0.25	0.20	250/260	0415-2042	
		0.30	250/260	0415-3062	
		0.53	0.50	250/260	0415-5092
30	0.25	1.20	250/260	0415-5122	
		0.10	250/260	0415-2003	
		0.15	250/260	0415-2023	
		0.20	250/260	0415-2043	

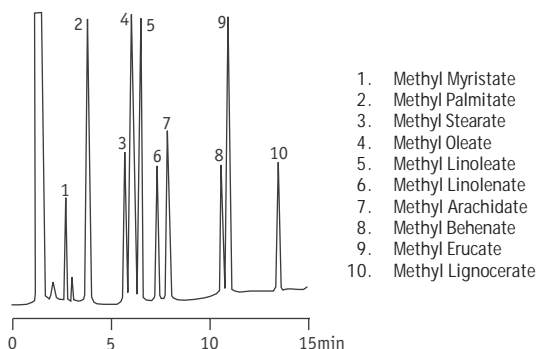
Ordering Information						
Length (m)	I.D. (mm)	Film (µm)	Temp. (°C)	Part No.		
30	0.25	0.25	250/260	0415-2053		
		0.50	250/260	0415-2093		
		1.00	250/260	0415-2113		
		0.32	0.10	250/260	0415-3003	
			0.15	250/260	0415-3023	
	0.25		250/260	0415-3053		
	0.30		250/260	0415-3063		
	0.50		240/250	0415-3093		
	50	0.25	1.00	240/250	0415-3113	
			0.53	0.25	250/260	0415-5053
				0.50	250/260	0415-5093
				1.00	250/260	0415-5113
				1.20	250/260	0415-5123
		1.50		250/260	0415-5153	
		2.00	240/250	0415-5233		
2.50			240/250	0415-5223		
5.00			240/250	0415-5213		
60			0.25	0.20	250/260	0415-2044
				0.32	0.30	250/260
		0.53		1.20	250/260	0415-5124
		0.32		0.10	250/260	0415-2005
				0.15	250/260	0415-2025
0.20			250/260	0415-2045		
0.25	250/260		0415-2055			
0.50	250/260		0415-2095			
60	0.25	1.00	250/260	0415-2115		
		0.15	250/260	0415-3025		
		0.25	250/260	0415-3055		
		0.30	250/260	0415-3065		
		0.50	240/250	0415-3095		
	1.00	240/250	0415-3115			
		0.53	0.25	250/260	0415-5055	
			0.50	250/260	0415-5095	
			1.00	250/260	0415-5115	
			1.20	250/260	0415-5125	
	1.50		250/260	0415-5155		

### C3-C5 Diols



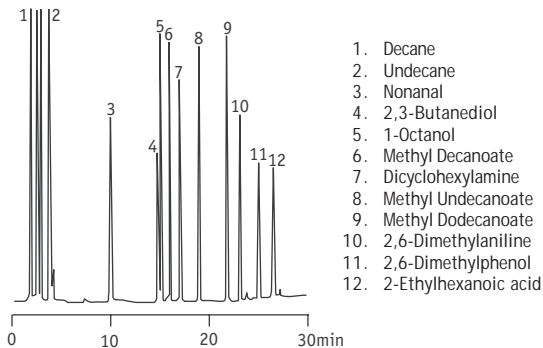
Column: VertiBond™ WAX, 15m x 0.25 mm, 0.25µm  
 Temp: 110°C, 110°C-170°C at 8°C/min  
 Injector: Split  
 Detector: FID  
 Carrier Gas: Hydrogen

### C14-C24 Fatty Acid Methyl Esters



Column: VertiBond™ WAX, 25m x 0.25mm, 0.20µm  
 Temp: 180°C-240°C at 5°C/min  
 Injector: Splitless  
 Detector: FID  
 Carrier Gas: Hydrogen at 0.8mL/min

### Grob Test Mixture



Column: VertiBond™ WAX, 50m x 0.32mm, 0.3µm  
 Temp: 60°C-220°C at 3°C/min  
 Injector: Splitless  
 Detector: FID  
 Carrier Gas: Hydrogen at 40cm/sec