

VertiBond™ WAXms Capillary Columns

- 100% Polyethylene Glycol (PEG)
- High polar stationary phase
- Low-Bleed for MS application or trace analysis
- High temperature range
- High efficiency, high inertness columns

VertiBond™ WAXms column contains 100% Polyethylene Glycol (PEG) stationary phase with low-bleed. This special WAX phase is for MS applications.

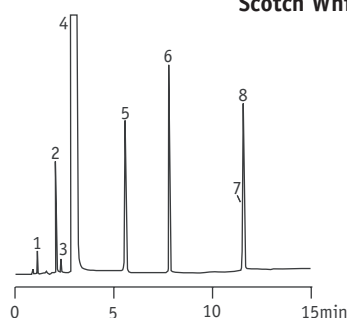
VertiBond™ WAXms Specifications

Phase:	100% Polyethylene Glycol
Polarity:	High Polar
USP Designation:	G14, G15, G16, G39
Ideal for:	Mass Spec Analysis

VertiBond™ WAXms Specifications

Restek	Rtx-WAX, Stabilwax
Agilent	HP-20M, HP-WAX, HP-INNOwax, HP Basic WAX, DB-WAX, CAM
Supelco	Supelcowax 10, Omega-Wax
Alltech	AT-WAX
SGE	BP-20
Varian	CP-WAX52CB, CP-WAX57CB
Ohio Valley	Carbowax 20M
Phenomenex	ZB-WAX

Scotch Whisky



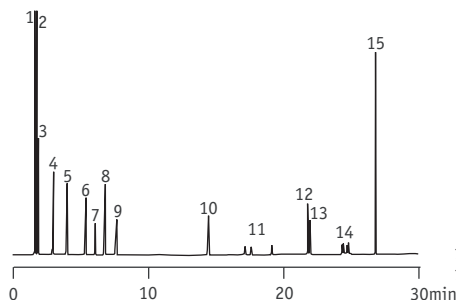
1. Acetaldehyde
2. Ethyl acetate
3. Methanol
4. Ethanol
5. 1-Propanol
6. 3-Pentanol
7. 2-Methyl-1-butanol
8. 3-Methyl-1-butanol

Column: VertiBond™ WAXms, 30m x 0.25mm, 0.25µm
 Temp: 30°C (hold 5 min), 30°C-80°C at 1°/min
 Injector: Split 1:50
 Detector: FID
 Carrier Gas: Nitrogen at 30mL/min

Ordering Information

Length (m)	I.D. (mm)	Film (µm)	Temp. (°C)	Part No.
15	0.25	0.25	280/280	0416-2051
	0.32	0.25	280/280	0416-3051
	0.53	1.00	260/260	0416-5111
30	0.25	0.25	280/280	0416-2053
	0.32	0.25	280/280	0416-3053
	0.53	1.00	260/260	0416-5113
60	0.25	0.25	280/280	0416-2055
	0.32	0.25	280/280	0416-3055

Cleaning Solvents



1. Methanol
2. *iso*-Propanol
3. Ethanol
4. *n*-Propanol
5. *iso*-Butanol
6. *n*-Butanol
7. Methyl Cellosolve
8. Limonene
9. Cellosolve
10. Butyl Cellosolve
11. Dipropylene Glycol Monomethyl Ether
12. Diethylene Glycol Ethyl Ether
13. Ethylene Glycol
14. Tripropylene Glycol Monomethyl Ether
15. Phenyl Cellosolve

Column: VertiBond™ WAXms, 30 m x 0.32 mm, 0.25 µm
 Temp: 35°C (hold 4 min), 35°C-85°C at 3°C/min, 85°C-200°C at 15°C/min, 200°C (hold 2 min)
 Injector: Split 1:100
 Detector: FID at 250°C
 Carrier Gas: Hydrogen