

VertiBond™ 1ms Capillary Columns

- 100% Dimethylpolysiloxane
- Non-polar stationary phase
- Low-Bleed for MS application or trace analysis
- High temperature range
- High efficiency, high inertness columns

VertiBond™ 1ms contains 100% Dimethylpolysiloxane stationary phase column with excellent thermal stability and low-bleed. This non-polar stationary phase improves signal to noise ratio for MS, ECD, NPD detectors and provides greater precision in trace analysis.



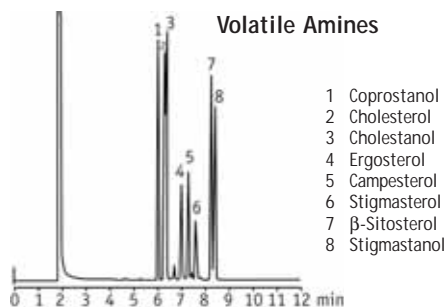
VertiBond™ 1ms Capillary Columns				
Length (m)	I.D. (mm)	Film (µm)	Temp. Limits (°C)	Part No.
15	0.25	0.10	340/360	0401-2001
		0.25	340/360	0401-2051
		0.50	340/360	0401-2091
	0.32	0.10	340/360	0401-3001
		0.25	340/360	0401-3051
		0.50	340/360	0401-3091
30	0.25	0.53	340/360	0401-5081
		0.10	340/360	0401-2003
		0.25	340/360	0401-2053
	0.32	0.50	340/360	0401-2093
		0.10	340/360	0401-3003
		0.25	340/360	0401-3053
60	0.25	0.50	340/360	0401-3093
		1.00	340/360	0401-3113
		0.53	340/360	0401-5093
	0.32	0.25	340/360	0401-2055
		0.25	340/360	0401-3055
		0.25	340/360	0401-3055

VertiBond™ 1ms Specifications

Phase:	100% Dimethylpolysiloxane
Polarity:	Non-polar
USP Designation:	G1, G2, G38
Ideal for:	Mass Spec Analysis for Environmental, PAH, CLP, Pesticides, Steroids and Drugs

VertiBond™ 1ms equivalent phase

Restek	Rtx-1ms
Agilent	HP-1ms, DB-1ms
Supelco	SPB-1, Equity-1, SPB-1 Sulfur
Alltech	AT-1ms
Varian	CP-SIL5CBMS



Column: VertiBond™ 1ms, 30m x 0.25mm, 0.25µm
 Part No.: 0401-2053
 Temp: 305°C
 Injector: split at 315°C
 (50:1 split ratio w/split flow of 32.4mL/min)
 Detector: FID at 315°C
 Carrier Gas: Helium at 0.7mL/min