

VertiBond™ 35

VertiBond™ 35 Capillary Columns

- 35% Phenyl, 65% Dimethylpolysiloxane
- Intermediate polar stationary phase
- High temperature range
- High efficiency, high inertness columns

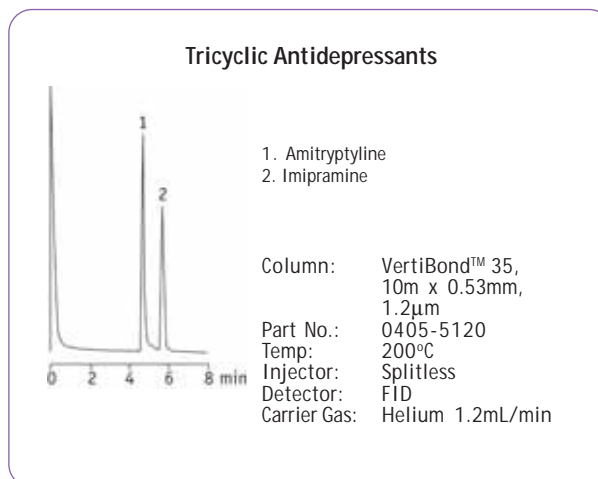
VertiBond™ 35 column contains 35% phenyl, 65% Dimethyl polysiloxane stationary phases. This intermediate polarity phase provides significant elution order and retention time changes.



VertiBond™ 35 Capillary Columns					
Length (m)	I.D. (mm)	Film (µm)	Temp. Limits (°C)	Part No.	
10	0.53	1.20	280/300	0405-5120	
		2.65	260/280	0405-5180	
15	0.25	0.10	300/320	0405-2001	
		0.25	300/320	0405-2051	
		0.50	300/320	0405-2091	
		1.00	280/300	0405-2111	
		0.32	0.10	300/320	0405-3001
			0.15	300/320	0405-3021
			0.25	300/320	0405-3051
			0.50	300/320	0405-3091
			1.00	300/320	0405-3111
			1.50	280/300	0405-3151
25	0.45	0.85	280/300	0405-4101	
		0.53	0.10	280/300	0405-5001
30	0.25	0.20	300/320	0405-2042	
		0.30	300/320	0405-3062	
		1.20	280/300	0405-5122	
		0.10	300/320	0405-2003	
		0.15	300/320	0405-2023	
		0.20	300/320	0405-2043	
	0.25	0.20	300/320	0405-2043	
		0.25	300/320	0405-2053	
		0.50	300/320	0405-2093	
		1.00	280/300	0405-2113	

VertiBond™ 35 Specifications	
Phase:	35% Phenyl, 65% Dimethylpolysiloxane
Polarity:	Intermediate Polar
USP Designation:	G42
Ideal for:	Pesticides, Herbicides, Drugs, Aromatics

VertiBond™ 35 equivalent phase	
Restek	Rtx-35
Agilent	HP-35, DB-35
Supelco	SPB-35
Alltech	AT-35
SGE	BPX35
Varian	CP-SIL24CB
Ohio Valley	OV-11
Phenomenex	ZB-35



VertiBond™ 35 Capillary Columns						
Length (m)	I.D. (mm)	Film (µm)	Temp. Limits (°C)	Part No.		
30	0.32	0.10	300/320	0405-3003		
		0.15	300/320	0405-3023		
		0.25	300/320	0405-3053		
		0.50	300/320	0405-3093		
		1.00	300/320	0405-3113		
	0.45	1.50	280/300	0405-3153		
		0.42	300/320	0405-4073		
		0.85	280/300	0405-4103		
		0.53	0.10	280/300	0405-5003	
			0.25	280/300	0405-5053	
50	0.25	0.10	280/300	0405-5093		
		1.00	280/300	0405-5113		
		1.20	280/300	0405-5123		
		1.50	260/280	0405-5153		
		2.65	260/280	0405-5183		
	0.32	3.00	260/280	0405-5193		
		0.20	300/320	0405-2044		
		0.30	300/320	0405-3064		
		60	0.25	0.10	300/320	0405-2005
				0.20	300/320	0405-2045
0.25	300/320			0405-2055		
60	0.25	0.10	300/320	0405-2095		
		0.50	300/320	0405-2095		
		1.00	280/300	0405-2115		
		0.32	0.10	300/320	0405-3005	
			0.25	300/320	0405-3055	
	0.53	0.50	300/320	0405-3095		
		1.00	300/320	0405-3115		
		1.50	280/300	0405-3155		
		0.10	280/300	0405-5005		
		0.25	280/300	0405-5055		
60	0.53	0.50	280/300	0405-5095		
		1.00	280/300	0405-5115		
		1.50	260/280	0405-5155		

