

## VertiBond™ 624 Capillary Columns

- 6% Cyanopropylphenyl, 94% Dimethylpolysiloxane
- Intermediate polar stationary phase
- High temperature range
- High efficiency, high inertness columns

VertiBond™ 624 column contains 6% Cyanopropylphenyl, 94% Dimethylpolysiloxane stationary phases. This intermediate polar stationary phase is developed specially and tested for volatile organic compounds, making it an excellent choice for several EPA methods like 501.3, 502.2, 524.2, 601, 602, 8010, 8015, 8020, 8221, 8240 and 8260.

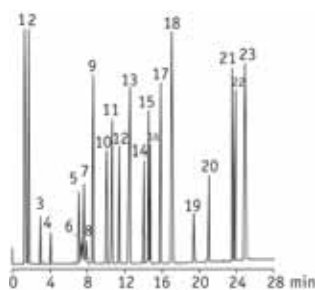


VertiBond™ 624 Capillary Columns				
Length (m)	I.D. (mm)	Film (µm)	Temp. Limits (°C)	Part No.
30	0.25	1.40	265/280	0414-2143
		1.80	265/280	0414-3163
	3.00	265/280	0414-3193	
	0.45	2.55	265/280	0414-4173
	0.53	3.00	265/280	0414-5193
60	0.25	1.40	265/280	0414-2145
		1.80	265/280	0414-3165
	0.53	3.00	265/280	0414-5195
75	0.53	3.00	265/280	0414-5196
105	0.53	3.00	265/280	0414-5197

VertiBond™ 624 Specifications	
Phase:	6% Cyanopropylphenyl, 94% Dimethylpolysiloxane
Polarity:	Intermediate Polar
USP Designation:	G43
Ideal for:	EPA Methods 524, 601, 602, 624, 8240 and 8260 and Solvent Analysis

VertiBond™ 624 equivalent phase	
Restek	Rtx-1301, Rtx-624
Agilent	HP-1301, HP-624, DB-1301, DB-624
Supelco	SPB-1301, OVI-G43
Alltech	AT-624
SGE	BPX-624
Varian	CP-1301, CP-624CB
Ohio Valley	OV-624
Phenomenex	ZB-624

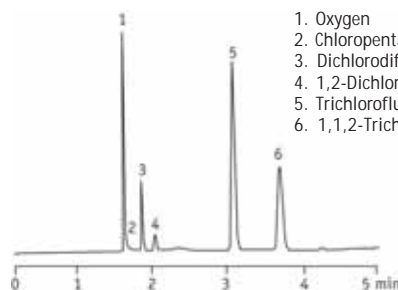
### Priority Pollutant Analysis



Column: VertiBond™ 624, 30m x 0.53mm, 3.0µm  
 Part No.: 0414-5193  
 Temp: 35°C (5min hold), 140°C at 5°C/min  
 Injector: Splitless  
 Detector: FID  
 Carrier Gas: Helium at 5mL/min

- 1 Methane
- 2 Chloromethane
- 3 Chloroethane
- 4 Methylene Chloride
- 5 Bromochloromethane
- 6 Chloroform
- 7 1,1,1-Trichloroethane
- 8 Carbon Tetrachloride
- 9 1,2-Dichloroethane
- 10 Trichloroethylene
- 11 1,2-Dichloropropane
- 12 Bromodichloromethane
- 13 *cis*-1,3-Dichloropropene
- 14 *trans*-1,3-Dichloropropene
- 15 1,1,2-Trichloroethane
- 16 Tetrachloroethene
- 17 Chlorodibromomethane
- 18 Chlorobenzene
- 19 Bromoform
- 20 1,1,2,2-Tetrachloroethane
- 21 *m*-Dichlorobenzene
- 22 *p*-Dichlorobenzene
- 23 *o*-Dichlorobenzene

### Chlorofluorocarbons



Column: VertiBond™ 624, 30m x 0.53mm, 3.0µm  
 Part No.: 0414-5193  
 Temp: 35°C (hold 4 min), 35°C-45°C at 10°C/min  
 Injector: Split 1:10, 100µL  
 Detector: ECD at 350°C  
 Carrier Gas: Nitrogen at 35mL/min

1. Oxygen
2. Chloropentafluoroethane
3. Dichlorodifluoroethane
4. 1,2-Dichlorotetrafluoroethane
5. Trichlorofluoromethane
6. 1,1,2-Trichlorotrifluoroethane