

VertiBond™ WAX

VertiBond™ WAX Capillary Columns

- 100% Polyethylene Glycol (PEG)
- High polar stationary phase
- High temperature range
- High efficiency, high inertness columns

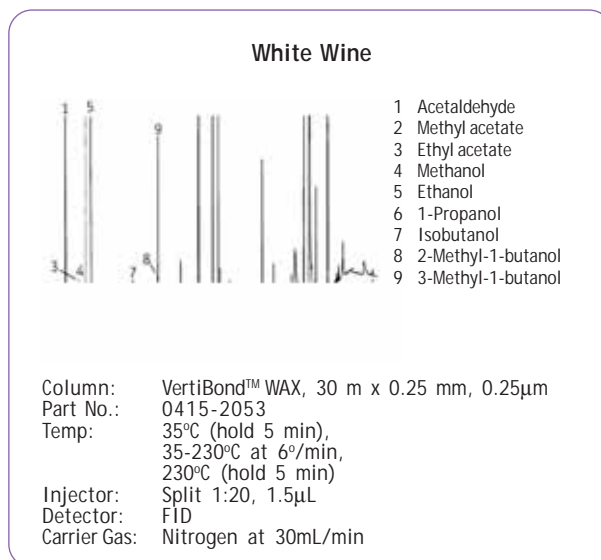
VertiBond™ WAX column contains 100% Polyethylene Glycol (PEG) stationary phase. This high polar phase offers a wide range of working temperatures (270°C) and ideals for alcohols, aldehydes, ketones, and aromatic isomers.



VertiBond™ WAX Capillary Columns					
Length (m)	I.D. (mm)	Film (µm)	Temp. Limits (°C)	Part No.	
10	0.25	0.20	250/260	0415-2040	
		0.25	250/260	0415-2050	
	0.53	1.20	250/260	0415-5120	
		0.10	250/260	0415-2001	
15	0.25	0.10	250/260	0415-2001	
		0.15	250/260	0415-2021	
		0.20	250/260	0415-2041	
		0.25	250/260	0415-2051	
		0.50	250/260	0415-2091	
		1.00	250/260	0415-2111	
		0.32	0.10	250/260	0415-3001
	0.53	0.15	250/260	0415-3021	
		0.25	250/260	0415-3051	
		0.30	250/260	0415-3061	
		0.50	240/250	0415-3091	
		1.00	240/250	0415-3111	
		2.50	240/250	0415-3221	
		0.25	250/260	0415-5051	
25	0.53	0.50	250/260	0415-5091	
		1.00	250/260	0415-5111	
		1.20	250/260	0415-5121	
		1.50	250/260	0415-5151	
	5.00	2.50	240/250	0415-5221	
		5.00	240/250	0415-5211	
		0.25	0.20	250/260	0415-2042
			0.32	0.30	250/260
0.53	0.50		250/260	0415-5092	
30	0.25	1.20	250/260	0415-5122	
		0.10	250/260	0415-2003	
		0.15	250/260	0415-2023	
		0.20	250/260	0415-2043	

VertiBond™ WAX Specifications	
Phase:	100% Polyethylene Glycol
Polarity:	High Polar
USP Designation:	G14, G15, G16, G39
Ideal for:	FAMES, Polar Solvents, BTEX, Flavor and Fragranced, Glycols, Alcohols, and Aromatics

VertiBond™ WAX equivalent phase	
Restek	Rtx-WAX, Stabilwax
Agilent	HP-20M, HP-WAX, HP-INNOWax, HP Basic-WAX, DB-WAX, CAM
Supelco	Supelcowax 10, Omega-Wax
Alltech	AT-WAX
SGE	BP20
Varian	CP-WAX52CB, CP-WAX57CB
Ohio Valley	Carbowax 20M
Phenomenex	ZB-WAX



VertiBond™ WAX Capillary Columns					
Length (m)	I.D. (mm)	Film (µm)	Temp. Limits (°C)	Part No.	
30	0.25	0.25	250/260	0415-2053	
		0.50	250/260	0415-2093	
		1.00	250/260	0415-2113	
	0.32	0.10	0.10	250/260	0415-3003
			0.15	250/260	0415-3023
		0.25	0.25	250/260	0415-3053
			0.30	250/260	0415-3063
			0.50	240/250	0415-3093
			1.00	240/250	0415-3113
	0.53	0.25	0.25	250/260	0415-5053
			0.50	250/260	0415-5093
		1.00	1.00	250/260	0415-5113
1.20			250/260	0415-5123	
1.50			250/260	0415-5153	
2.00			240/250	0415-5233	
50	0.25	0.20	250/260	0415-2044	
		0.32	250/260	0415-3064	
		0.53	250/260	0415-5124	
	0.32	0.10	0.10	250/260	0415-3005
			0.15	250/260	0415-3025
			0.25	250/260	0415-3055
60	0.25	0.10	250/260	0415-2005	
		0.15	250/260	0415-2025	
		0.20	250/260	0415-2045	
	0.53	0.25	0.50	250/260	0415-2095
			1.00	250/260	0415-2115
			1.50	250/260	0415-5155

