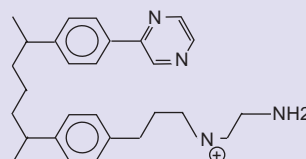


Polymeric SPE

VertiPak™ HCP-WA

- VertiPak™ HCP-WA SPE is mixed-mode, chemical modified Vinylpyrazine-Divinylbenzene Copolymer-Ethylenediamine-N-propyl (VPZ-DVBE) polymeric sorbent offering both strong reverse phase interaction and weak anion-exchange interaction with interference-free extraction, compatability with LC-MS or GC-MS.
- Needs no condition solvent, aqueous sample can be loaded directly to the dry sorbent bed.
- Exhibits very high binding capacity over mixed-mode silica-based sorbent, up to 30% of sorbent weight allowing larger sample loads or a smaller sorbent bed resulting in high, reproducible recoveries and less solvent usage.
- Exhibits excellent mass transfer and mechanical strength for acidic polar compounds in an aqueous sample or a biological fluid sample.
- Typical applications include acidic drugs and metabolites from biological fluids, environmental pollutants from water, drugs of abuse and metabolites from urine e.g. salicylic acid, ibuprofen, acetaminophen, 11-nor-delta-9-tetrahydrocannabinol-9-carboxylic acid without acid modifiers.
- Tube format is available in 4 tube sizes.
- Tubes are packaged in zip sealing bag protective from moisture and light.
- Includes a Performance report including the QC results, lot chromatogram and lot recovery test.

Chemical structure



VertiPak™ HCP-WA (Vinylpyrazine-Divinylbenzene Copolymer-Ethylenediamine-N-propyl, VPZ-DVBE)

Specifications

Base	HCP-WA (Vinylpyrazine-Divinylbenzene Copolymer-Ethylenediamine, VPZ-DVBE)
Particle Size (µm)	30-50
Pore Size (Å)	80-90
Surface Area (m ² /g)	700-800
Carbon Load (%)	-
Endcap	No
pH Stability	1-14

VertiPak™ HCP-WA Tubes

Bed Weight	Tube Size	QTY	Part No.
30mg	1mL	100	0146-0136
30mg	3mL	50	0146-0145
60mg	1mL	100	0146-1536
60mg	3mL	50	0146-1545
60mg	10mL	30	0146-1564
100mg	1mL	100	0146-0336
100mg	3mL	50	0146-0345
100mg	10mL	30	0146-0364
200mg	3mL	50	0146-0445
200mg	6mL	30	0146-0454
200mg	10mL	30	0146-0464
500mg	3mL	50	0146-0645
500mg	6mL	30	0146-0654
500mg	10ml	30	0146-0664

