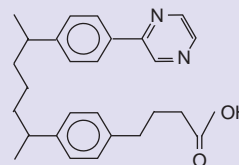


## VertiPak™ HCP-WC

- VertiPak™ HCP-WC SPE is mixed-mode, chemical modified Vinylpyrazine-Divinylbenzene Copolymer-Carboxypropyl, (VPZ-DVBC) polymeric sorbent offering both strong reversed phase interaction and weak cation-exchange interaction with interference-free extraction, compatability with LC-MS or GC-MS.
- Exhibits very high binding capacity over mixed-mode silica-based sorbent, up to 30% of sorbent weight allowing larger sample loads or a smaller sorbent bed resulting in high, reproducible recoveries and less solvent usage.
- Exhibits excellent mass transfer and mechanical strength for basic polar compounds in an aqueous sample or a biological fluid sample without base modifiers.
- Typical applications include basic drugs and metabolites from biological fluids, environmental pollutants from water, drugs of abuse and metabolites from urine e.g. amphetamine, methamphetamine, opiate, barbiturate, cocaine, THC.
- Tube format is available in 4 tube sizes.
- Tubes are packaged in zip sealing bag protective from moisture and light.
- Includes a Performance report including the QC results, lot chromatogram and lot recovery test.



### Chemical structure



VertiPak™ HCP-WC (Vinylpyrazine-Divinylbenzene Copolymer-Carboxypropyl, VPZ-DVBC)

### Specifications

Base	HCP-WC (Vinylpyrazine-Divinylbenzene Copolymer-Carboxypropyl, VPZ-DVBC)
Particle Size (µm)	30-50
Pore Size (Å)	80-90
Surface Area (m <sup>2</sup> /g)	700-800
Carbon Load (%)	-
Endcap	No
pH Stability	1-14

### VertiPak™ HCP-WC Tubes

Bed Weight	Tube Size	QTY	Part No.
30mg	1mL	100	0145-0136
30mg	3mL	50	0145-0145
60mg	1mL	100	0145-1536
60mg	3mL	50	0145-1545
60mg	10mL	30	0145-1564
100mg	1mL	100	0145-0336
100mg	3mL	50	0145-0345
100mg	10mL	30	0145-0364
200mg	3mL	50	0145-0445
200mg	6mL	30	0145-0454
200mg	10mL	30	0145-0464
500mg	3mL	50	0145-0645
500mg	6mL	30	0145-0654
500mg	10ml	30	0145-0664